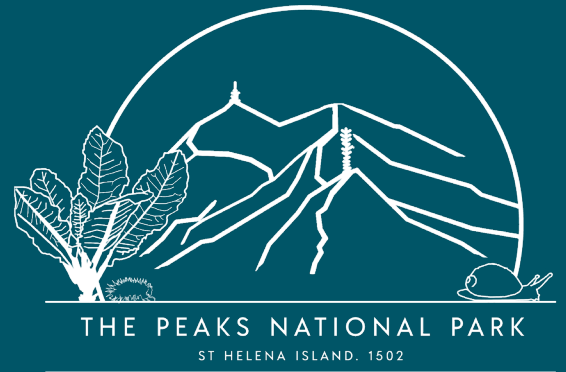


# The St Helena Cloud Forest Project

## Key achievements year 1



# 50%

In this financial year work has been undertaken in **50% of remaining cloud forest fragments** to clear invasive species and/or plant with endemics.



# 17

**10,882 plants** from 17 different Peaks' species were planted into wild restoration sites.



# 5

**7,934 plants** were planted into 5 living field gene banks.



**42,773 plants** were propagated from Peaks species across both nurseries (target was 27,500 plants).



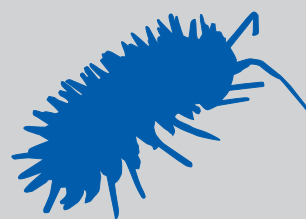
# 8

Visits from **eight international, expert partners** provided training for staff in EMD, SHRI, Connect St Helena and SHNT.



# 142

**9 school sessions** with **142 children** held as part of the project in year 1.

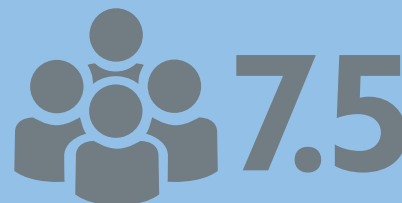


# 476

**Over 1900** invertebrate species records were collected, of which 476 were endemic species records.



A new world class facility for the Micro Propagation of plants, particularly threatened fern species was set up on St Helena by St Helena Government's Environmental Management Division, supported by the **Royal Botanic Gardens Kew**.

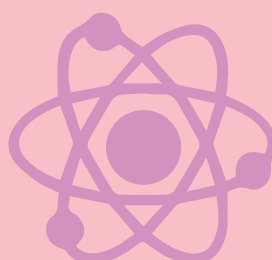


# 7.5

**7.5 full time** equivalent posts were recruited to support the Cloud Forest Project in Year 1, of which **6.5 posts** were locally based St Helenians or Saints.



More than **100 responses** to our baseline engagement survey were received in March 2022.



The Cloud Forest Project featured on Sky news on 11 February celebrating **'Women in Science Day'**, represented by EMD's Nursery Officer, Vanessa Thomas-Williams (MBE).